

# Millhouse Primary School

## Newsletter

[www.millhouseprimary.co.uk](http://www.millhouseprimary.co.uk)

A Small School with a Big Heart



### Message from Mrs. Gray:

Happy New Year! I hope that you have all had a lovely Christmas. There is a lot to look forward to this term including the choir's trip to Young Voices and the Y5 and Y6 visit to Robinwood this week. We can't wait! Watch out for the class topic letters which will be sent out soon and provide information of the exciting learning ahead for each class.



### Congratulations!

We have some exciting news. Miss Parkin got married over the Christmas break. We'd like to wish her and her new husband every happiness. Her new name is Mrs. Parkin-Roberts but in school she is making it easy for us by being known as Mrs. Parkin!

### Clubs

Our after school club programme will start again next week (w/c 14.1.19):

Monday – Cartoon Club

Tuesday – Bruce Dyer's Football Club

Wednesday – Dodgeball

Thursday – Choir

Club letters have been sent out today. Please ensure that you send your reply slips back quickly in order to secure your child a place.

### Attendance:

Target: 96.5%



We achieved 96.53 % attendance for the Autumn term in line with our target. 96 pupils met or exceeded our attendance target. Well done! Parents will be informed by email this week if their child achieved our good attendance award. Names of these pupils will be entered into a raffle to win a prize.

43 children achieved 100% attendance for the whole term. Certificates will be given out this week. Fantastic!

**Remember every school day counts!**

### Dinner Money:

The cost of dinner money remains £11 per week. If you wish to pay for the half term the cost is £66.

### Inspire Mornings

This half term Class 1 and Class 2 will host their Inspire Mornings:

Class 1 – 23.1.19

Class 2 – 30.1.19

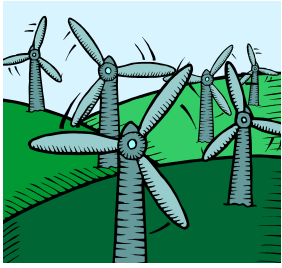
These are always popular events and provide a fantastic insight into life in school. We hope to see you there!

### Adverse weather

In the event of adverse conditions ( I am keeping my fingers crossed that the weather is kind to us!), we will endeavour to open wherever possible but if a decision is made to close the school a text message will be sent to all parents, and the details forwarded to Dearne FM radio station (102 and 97.1). <http://www.dearnefm.co.uk/news/school-closures>

Information about the closure will also be uploaded to the Barnsley Council website.





Email: [schooloffice@millhouseprimary.co.uk](mailto:schooloffice@millhouseprimary.co.uk)

Spring Term 2019 Issue 1

# Millhouse Primary School

## Newsletter

[www.millhouseprimary.co.uk](http://www.millhouseprimary.co.uk)

A Small School with a Big Heart

