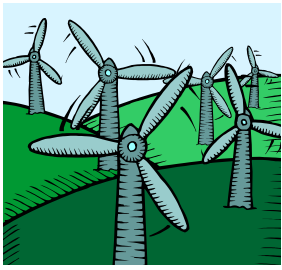


# Millhouse Primary School Newsletter

[www.millhouseprimary.co.uk](http://www.millhouseprimary.co.uk)

**A Small School with a Big Heart**



## Message from Mrs. Gray:

Class 1, 2 and 3 enjoyed a fabulous day out on Tuesday, visiting the Yorkshire Wildlife Park. Staff were extremely impressed with their sensible behaviour and the interest and enthusiasm shown during the visit. I am looking forward to seeing some wonderful follow up work in school. Thank-you to the parents who gave up their time to help us on the trip.

Unfortunately we had to cancel the Fell Run on Thursday as parts of the route were too slippery due to the wet weather. We hope to be able to reschedule it before the end of term.

## School Uniform orders

Please return orders for school uniform by Thursday 30<sup>th</sup> June.

## Sports Day!

Sports Day will take place (fingers crossed!) on Friday afternoon from 1:15pm. We hope that many of you can join us. Please ensure that children have their PE kits, including trainers, in school. They will also need a water bottle and a sun hat/ sun cream if the weather is warm. A text message will be sent if we need to cancel the event – let's hope that the rain stays away this week! We wish to thank the Spar in Penistone for kindly donating refreshments and raffle prizes.

## Special Mentions:

Special Mentions on Friday were awarded to:

C1 Rosie

Whole of Class 1 – super behaviour on their very first visit.

C2 Isaac and Alex

C3 Elliott and Eva

C4 Joshua and Hollie

C5 Amy and William

## Super effort!



## Attendance:

**Target: 96%**



The Attendance Award was presented to Class 1 this week with 99% attendance. Super!

Class 1 – 99%

Class 2 – 96%

Class 3 – 92%

Class 4 – 97%

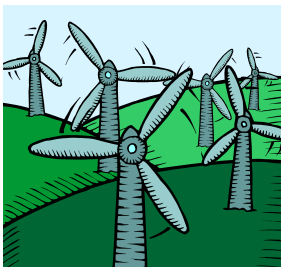
Class 5 – 98%

**REMEMBER EVERY DAY COUNTS**

# Millhouse Primary School Newsletter

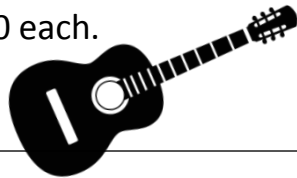
[www.millhouseprimary.co.uk](http://www.millhouseprimary.co.uk)

**A Small School with a Big Heart**



## **Guitar Concert**

Pupils in Year 3 and 4 are performing in a concert held at the Elsecar Heritage Centre on Wednesday morning. Please can you ensure that permission slips have been returned and that the children remember to bring their guitars to school on Wednesday. Parents are welcome to attend. The concert starts at 10:30am and tickets are available on the door at a cost of £2.00 each.



## **Shakespeare Rocks!**

Tickets for Shakespeare Rocks will go on sale in school this week to parents with pupils in Key Stage 2– watch out for a letter in your child's book bag. Due to fire regulations, initially tickets will be limited to 3 per family.

## **Barnsley Music Service – Instrument lessons**

We have been notified by BMS that there will be an increase in the cost for music tuition from September 2016.

Currently a charge of £45.00 per term is made for this, but there will be an increase to £48.00 from the Autumn term. The cost for instrument hire remains the same, at £15.00 per term.

## **Transition day**

On Thursday Year 6 pupils attend Penistone Grammar School for their first taster day. We wish them lots of luck and are sure that they will quickly impress their new teachers with their great attitudes.

Within school on this day, pupils will get the opportunity to experience the class they will be in in September. Children in classes 2-5 should arrive at their normal class for registration and will be dismissed from their usual classroom door.

Please could Class 1 children enter through the main door to reception as they will be registering in the hall as last week. The children will leave from this door too.

## **Dinner Money**

From September 2016 school lunches will rise to £2.00 per day (£10.00 per week) for children who do not receive free school meals as either an infant pupil or a pupil in receipt of free school meal status. We currently subsidise school meals to a significant degree and if we were to charge the actual cost directly to parents, it would result in a much greater rise. We hope parents will agree that £2.00 per school lunch is still a reasonable amount to pay for the quality and quantity of food received.